



CLOS DE LA TECH

SANTA CRUZ MOUNTAINS

2024 PRESS KIT

CLOS DE LA TECH

SANTA CRUZ MOUNTAINS



PRESS KIT CONTENTS

- i. FORWARD
- ii. COMPANY DESCRIPTION
- iii. HISTORY
- iv. OUR MISSION
- v. BIOS
- vi. ESTATE VINEYARDS
- vii. THE TECHNOLOGY
- viii. WINE PORTFOLIO
- ix. WINERY IMAGES
- x. CONTACT INFORMATION

CLOS DE LA TECH

SANTA CRUZ MOUNTAINS



FORWARD

PREMIER PINOT NOIR

Our wine making method is faithful to that of Ouvrard, the winemaker who brought prominence to Romanée-Conti in the 1830s.

It is truly "methode ancienne," including handpicking, foot crushing, native yeast fermentation and no filtering. The theory is to bring our special fruit to the bottle without manipulation. With these methods, one can easily taste the difference between the vineyards and their unique expressions of terroir.



CLOS DE LA TECH

SANTA CRUZ MOUNTAINS



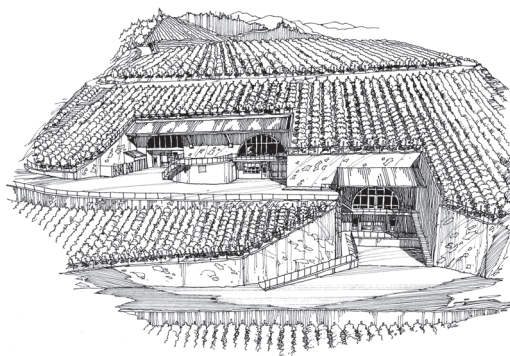
COMPANY DESCRIPTION

About Clos de la Tech As a leading domestic wine company, Clos de la Tech are growers and producer of estate Pinot Noir wines, and develops leading technologies in farming and viticulture in California. As a top U.S. wine producer, the company leverages the talents of owner T.J. Rodgers to advance economic opportunity, sustainability and community impact. Clos de la Tech diverse team is committed to innovating for the future and living the company's core values of quality, pursuit of excellence and integrity.

Learn more at www.closdelatech.com.

A stylized, handwritten signature in black ink, appearing to read 'T.J. Rodgers'.

T.J. Rodgers





HISTORY

- 1994** Our first vineyard was planted at our home in Woodside, California. Domaine du Docteur Rodgers is a single-acre, densely planted hilltop vineyard in California's Santa Cruz Mountains.
- 1996** Release of the first vintage of Pinot Noir from Domaine du Docteur Rodgers.
- 2000** Planting of new Pinot Noir vines on various hillside blocks were named Domaine Lois Louise, that surround the mountain winery.
- 2002** We broke ground on constructing our three-cave, gravity flow winery on a newly purchased 240-acre estate, located in the Santa Cruz Mountains AVA.
- 2012** Completion our new "high-tech" mountain winery at Domaine Lois Louise.
- 2015** Valeta Rodgers becomes the Director of Winemaking.
- 2018** Vittorio Gambini is hired as Managing Director to oversee sales & marketing.
- 2023** Vittorio Gambini is promoted to President of Clos de la Tech LLC.

CLOS DE LA TECH

SANTA CRUZ MOUNTAINS



OUR MISSION

Our goal is clear: To make the New World's Best Pinot Noir. In doing so, we hope to seriously challenge the greatest Burgundies that have dominated premium Pinot Noir production since the 13th century.





BIO



T.J. RODGERS

Owner and Chief Winemaking Officer

T.J. Rodgers is the Owner and Chief Winemaking Officer for Clos de la Tech. He has been making wine with his wife since 1996. Our first vineyard is the premier one-acre vineyard, Domaine du Docteur

Rodgers, which produces only 100 cases of handcrafted Pinot Noir annually. Our second vineyard is Domaine Valeta, so high in the Santa Cruz Mountains that it snows, which produces only 200 cases of Pinot Noir annually. And, finally, our third vineyard, the renowned Domaine Lois Louise, which currently produces 2,500 cases of Pinot Noir annually and will produce 10,000 cases when in full production.

T.J. was also the founder, president, CEO, and a director of Cypress Semiconductor Corporation for 34 years; an industry record. He is a former chairman of the Semiconductor Industry Association (SIA) and sits on the board of directors of high technology companies, including, Enphase Energy, Enovix, Complete Solaria and several private companies. He was also a member of the board of trustees at Dartmouth College, his alma mater. T.J. lives in Woodside with Valeta and their Jack Russell Terriers, Brett and Elvis.



BIO



VALETA RODGERS

Owner and Winemaker

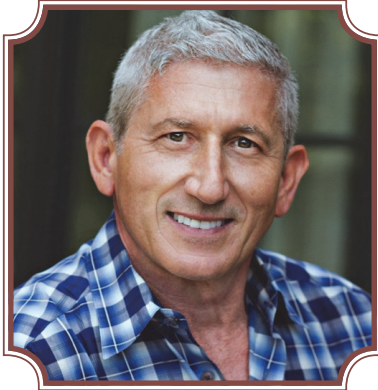
Valeta worked for Cypress Semiconductor since she was 19; where she fell in love with semiconductor technology. This led her to study Electrical Engineering and Computer Science at UC Berkeley allowing her to become a Sr. SRAM design engineer.

Winemaking suits her well. It's a discipline that requires equal parts logic and passion – two traits she has in spades. Her passion for wine was kindled in the 1990s during a tour of Burgundy with T.J., her husband. The experience had a profound effect on her life and influenced many of Clos de la Tech's future viticultural and enological practices including site selection, high-density planting, farming for low yields, intensive fruit sorting, foot crushing, native yeast fermentations and whole-cluster fermentations.

Valeta lives in Woodside with T.J. and their Jack Russell Terriers, Brett and Elvis.



BIO



VITTORIO GAMBINI

President - Vittorio Gambini has led an impressive career as a senior executive and his 30 years working in the wine industry. Vittorio has been featured in several well-known industry publications, including Wine Spectator, Food Arts, and Wine

Business Monthly.

Serving as the President at Clos de la Tech, Vittorio plays a major role in sales, marketing, and financials. Through his commitment to this role, he has helped improve brand equity, and a strong position with distributor partners.

Prior to his current role at Clos de la Tech, Vittorio worked as Managing Director at Clos de la Tech, focusing on distribution growth in the northeast, Midwest and California. Vittorio has an in-depth knowledge and background in the fine dining sector and has guided Clos de la Tech's portfolio into the best restaurants in the nation. Before joining the Clos de la Tech team, he was COO of Westerly Vineyards from 2009-2013.

Mr. Gambini has two sons Anthony and Dominick and resides in Carlsbad, Ca. with his wife Peggy and their Shih Tzu, Jack.



ESTATE VINEYARDS

DOMAINE DU DOCTEUR RODGERS: **Domaine du Docteur Rodgers (DDR)** is our flagship vineyard surrounding our house in Woodside, California – the San Francisco Bay wine-growing region. The vineyard is one acre, close-planted with 4,149 vines per acre. Today, half of the vineyard has been replanted in a super-dense “Goblet” format with our preferred Dijon 828 clone at a record density of 6,132 vines per acre.

DOMAINE VALETA: **Domaine Valeta “Sunny Slope” (DV)** is on the next mountain just southwest of the fabled Ridge Monte Bello Vineyard in the Santa Cruz Mountains. It faces the San Francisco Bay at 2,300 feet above sea level. The 3.5 acre vineyard produces our most delicate, fragrant Burgundian wine with beautiful perfume.

DOMAINE LOIS LOUISE: **Domaine Lois Louise (DLL)** consists of vineyards, Twisty Ridge, Côté Sud, and Santa Cruz Mountains Estates, all facing the Pacific Ocean. DLL surrounds our gravity-flow winery built in 2012 with three 300-foot caves designed by T.J. Rodgers. The topography is steep hillside with an average grade of 35%. It requires a one-of-a-kind tractor (designed and built for T.J.), lowered by cables and controlled with a joystick, to traverse vertical and horizontal slopes.



THE TECHNOLOGY

Cyress Semiconductor's PSoC (Programmable System-on-Chip) technology serves multiple functions at Clos de la Tech. Developed for UC Davis' viticulture and Enology Department, PSoC can be used to measure several different temperatures, measure brix (the sugar content of a liquid), schedule and perform automatic pumpovers and send all of this information straight to a computer using a radio chip.



CLOS DE LA TECH

SANTA CRUZ MOUNTAINS



WINE PORTFOLIO

PINOT NOIR

SANTA CRUZ MOUNTAINS ESTATES
CLOS DE LA TECH
2017

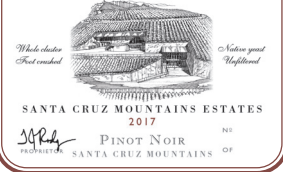
SRM
PRODUCE OF CALIFORNIA

Pinot Noir: Clos De La Tech uses a portion of our Santa Cruz Mountains Estates wine under this alternate label for on-premises trade accounts. Designed for by-the-glass offerings at fine dining restaurants nationally.

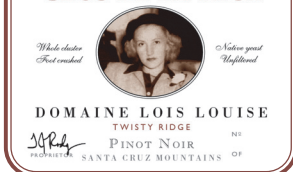
Santa Cruz Mountains Estates: This Pinot Noir combines wine from the mountain vineyard – Domaine Lois Louise and Domaine Valeta – making this a very complex wine. The flavor delivers a touch of nostalgia, transporting you to old world France. The vineyards' locations are extremely steep, ranging from 1,700-1,850 feet above sea level.

Surface area: {40 acres planted to vine}

CLOS DE LA TECH

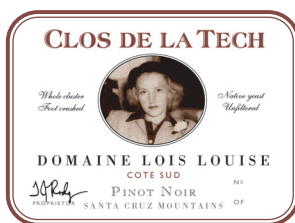


CLOS DE LA TECH



Domaine Lois Louise Twisty Ridge: A deeply colored and extracted wine with great aging potential. The 18-inch clay-loam topsoil and cold windy weather of Twisty Ridge produces a “big red wine.” – Ronn Wiegand Twisty Ridge resides at the top of DLL and points directly toward the Pacific Ocean. The vineyard is very narrow and must be farmed by hand. The wine is intense, youthful, and both richly fruity (blueberry and blackberry) with light oak and a persistent aftertaste.

Surface area: {3 acres planted to vine}

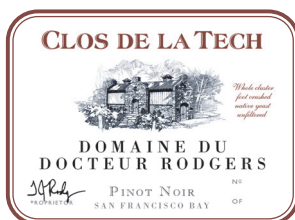
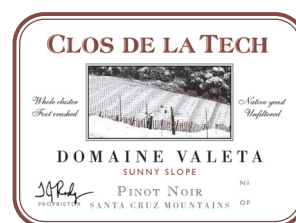


Domaine Lois Louise Côté Sud: This immediate neighbor of Twisty Ridge produces Pinot Noir with a “blow away” bouquet. The bouquet is intense and refined, with cherry, blueberry, black tea, toasty oak, cedar and vanilla aromas. The palate is fleshy, full bodied and balanced — long on the palate and persistent on the finish. The vineyard resides at the top of a long, steep south-facing slope, which increases warmth in an otherwise very cool environment.

Surface area: {4 acres planted to vine}

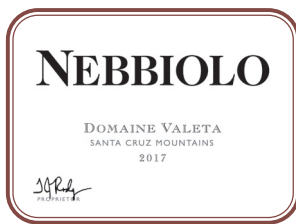
Domaine Valeta Sunny Slope: Upon sipping Domaine Valeta Sunny Slope, you are met with an exotic flavor full of quality and exuberance. This 2,350-foot above-sea-level vineyard is located just west of fabled Ridge Monte Bello, with snow occurring each on the occasional winter. We call Domaine Valeta Sunny Slope our delicate, fragrant Burgundian wine.

Surface area: {3.5 acres planted to vine}



Domaine Du Docteur Rodgers: This vineyard is located at TJ and Valeta Rodgers’ residence in the San Francisco Bay AVA. The wine is made in an on-site farmhouse winery that evokes images of Vosne-Romanée and the magic of Romanee-Conti. The following note is from the first sommelier to hold both Master of Wine and Master Sommelier titles, Ronn Weigand, “the aroma is intense, ripe, and very distinctive (cherry, blueberry, cooked meat, eucalyptus, mint)—just excellent. Outstanding quality.”

Surface area: {One acre planted to vine}



Domaine Valeta Nebbiolo: On a mountaintop in the Santa Cruz Mountains, 2,350 feet above the Silicon Valley. We decided to plant a half-acre in 2009 of Nebbiolo (Clones 146 & 230) for our personal use as we are fond of the great wines of Barolo and Barbaresco of Northwest Italy. The grapes come from a hidden, west-facing block, overlooking the famed Monte Bello vineyard. The soils are a mix of fractured weathered sandstone and sandy loam.



5 Year Alambic Brandy: Introducing Clos de la Tech 5-Year Brandy – the 2014 vintage from Domaine Lois Louise, Santa Cruz Mountains Estates. This artisanal spirit, made in small quantities of 100% Pinot Noir grapes, was a collaboration of winemaker Valeta Rodgers of Clos de la Tech and master (Alambic) distiller Joe Thomas Corley.

CLOS DE LA TECH

SANTA CRUZ MOUNTAINS



WINERY IMAGES



Domaine du Docteur
Rodgers Farmhouse
Winery at the Rodgers
Residence, Est 1996



Domaine Lois Louise
Three-Cave Santa Cruz
Mountains Winery, Est 2012



Fermentation Cave A,
Domaine Lois Louise
Santa Cruz Mountains
Winery

CLOS DE LA TECH

SANTA CRUZ MOUNTAINS



CONTACTS

OWNER & CHIEF WINEMAKER OFFICER

T.J. Rodgers

valeta@tjrodgers.com

OWNER & DIRECTOR OF WINEMAKING

Valeta Rodgers

valeta@tjrodgers.com

PRESIDENT

Vittorio Gambini

vito@closdelatech.com

760-840-7697

DIRECTOR OF CUSTOMER SERVICE

Claudia Garcia

claudia@closdelatech.com

510-228-6042

DIRECTOR OF ACCOUNTING

Rocio Talavera

rociot@comcast.net

510-706-0699